

ULTRA POLISHED
DOUBLE
CHARGE
VITRIFIED TILES



Bring home your
perfect moment



Double Charge collections of natural stone tile in addition to vitrified and ceramic tiles. We carry several shades and colours of marble, slate, limestone, travertine, granite, and quartzite

Company Profile

To produce the high quality tiles with superior worth we are using superior quality raw materials. We are having our own imported high equipped lab draws to superior quality of tiles and testing all raw materials with high class lab equipments.

We believe it is better to lose money than trust. Truth is that customer is god for us so to get happy our god we need to be honest in our work and pledge. so it is our inherent principal to offer remarkable vitrified tiles with uphold quality because we are being committed to uphold quality at every stage and maintain consistency to win the trust of our valued customers nationwide. also the company's credibility & standards do not allow it to compromise on quality.



Style and Modernity Concept.



DOUBLE CHARGE
VITRIFIED TILES

600x1200mm

DOUBLE CHARGE

DREAM
SERIES

800x800mm

DOUBLE CHARGE

Glacier | **PLATINUM**
SERIES | SERIES

600x600mm

DOUBLE CHARGE

ROYAL | **Amber**
SERIES | SERIES

 Ultra Polished
Nano Technology

 Divine
Glossiness

 Abrasion
Resistance

 Eco Friendly

 Zero
Maintenance

 100% Replacement
for Italian Marble

 Low Water
Absorption



DREAM
SERIES

60x120cm
600x1200mm

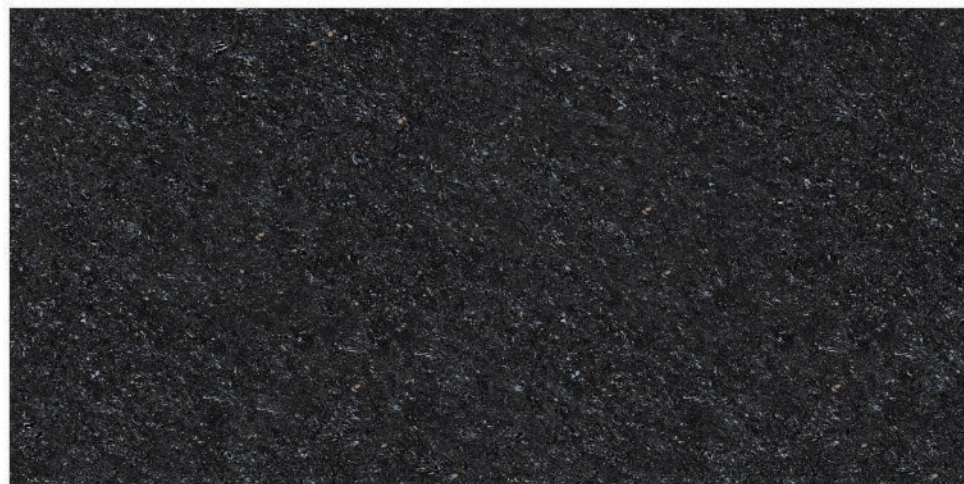
NANO TECH
**Double
Charge**
VITRIFIED TILES



DREAM MOCA



DREAM CHOCO



DREAM GALAXY



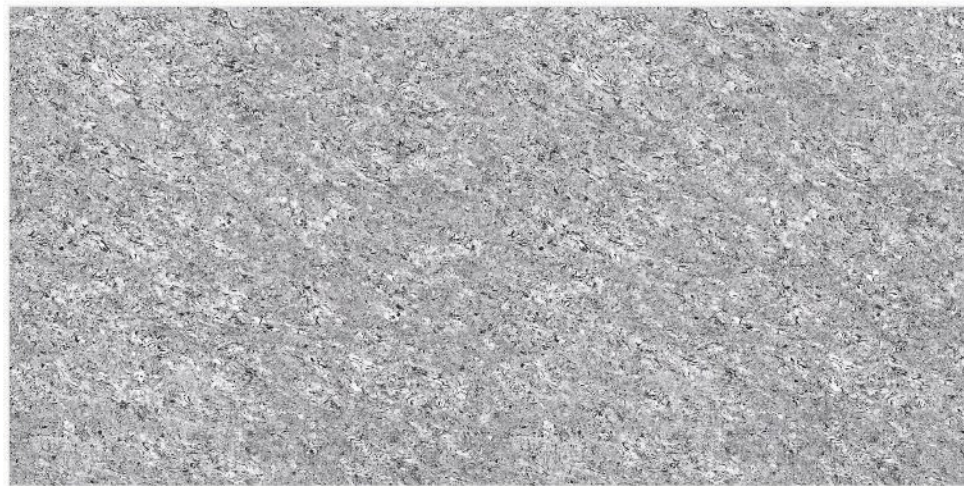
DREAM
SERIES

60x120cm
600x1200mm

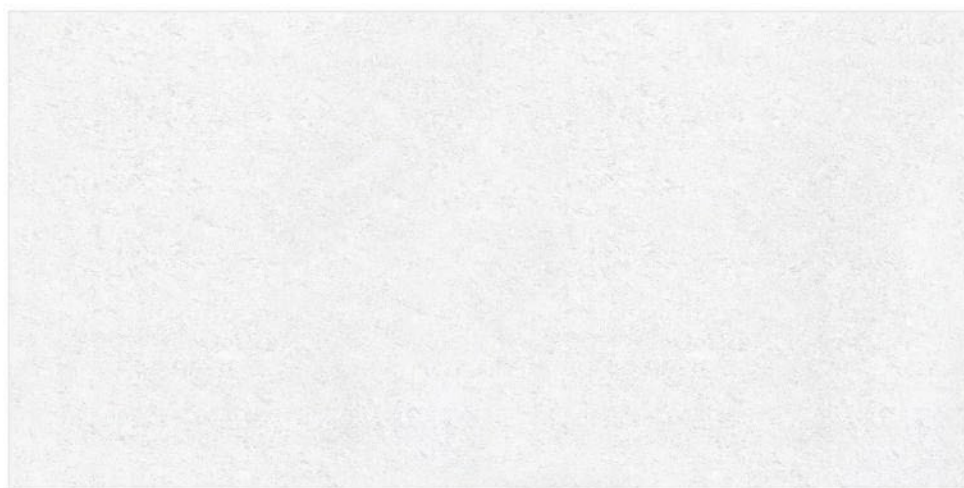
NANO TECH
**Double
Charge**
VITRIFIED TILES



DREAM GOLD

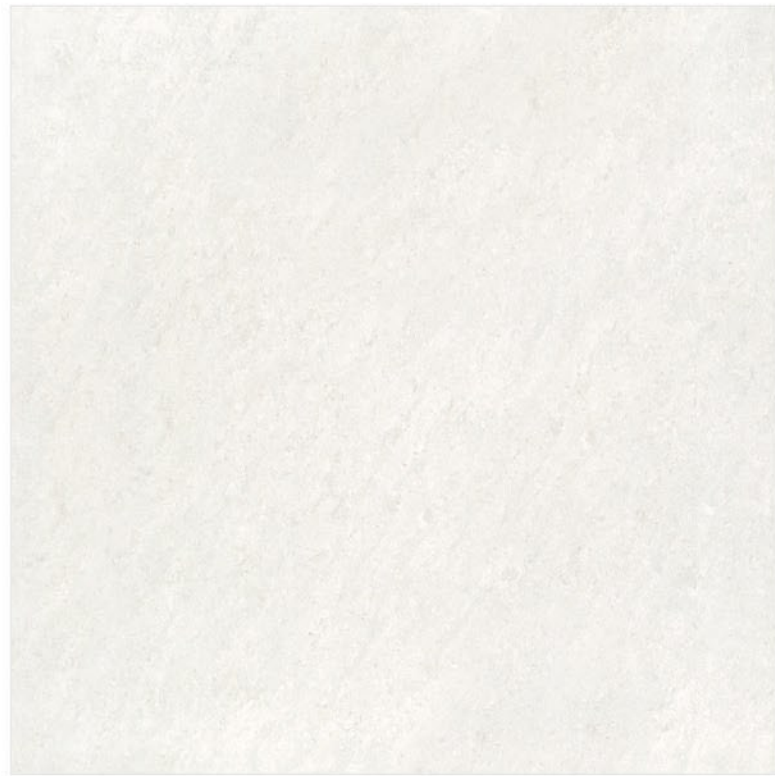


DREAM GREY



DREAM WHITE





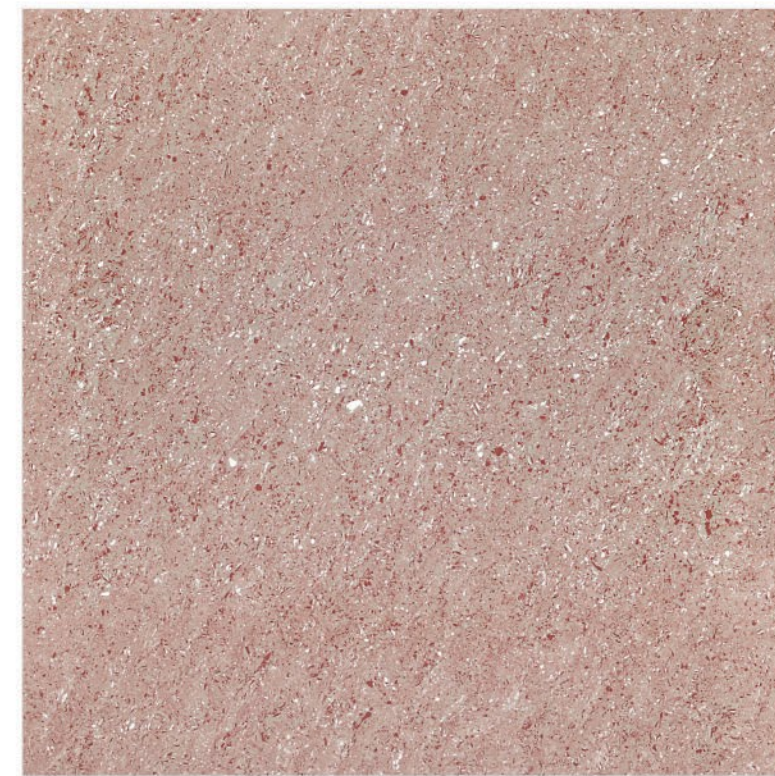
GLACIER WHITE



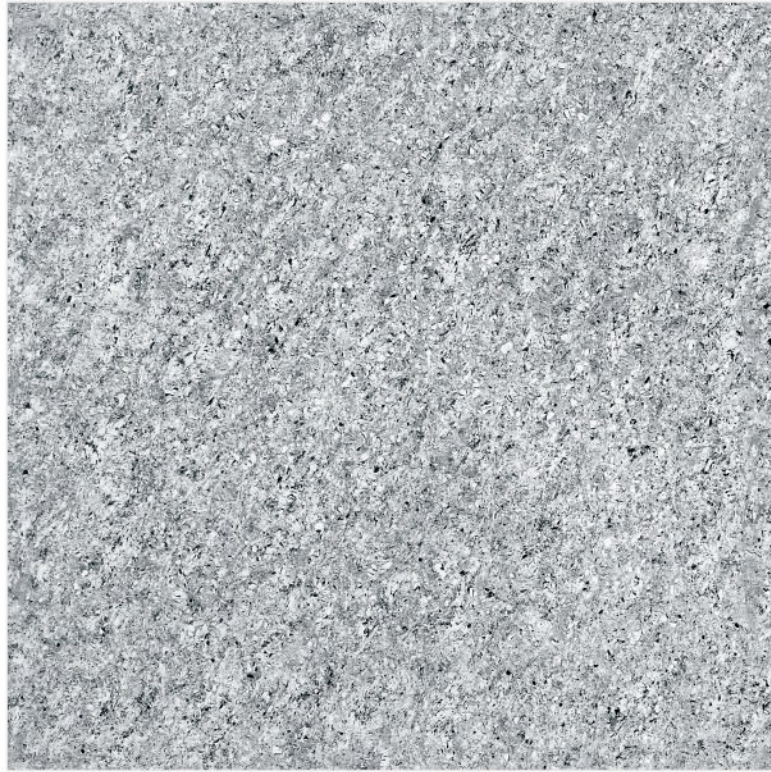
GLACIER GOLD



GLACIER TERRA



GLACIER RUBY

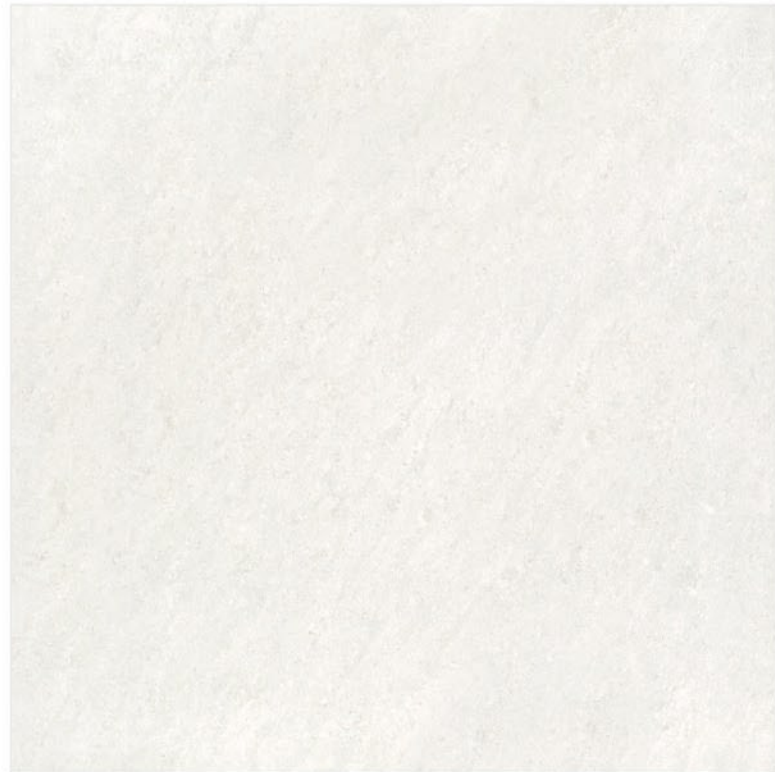


GLACIER GREY



GLACIER ASH





PLATINUM WHITE





AMBER WHITE



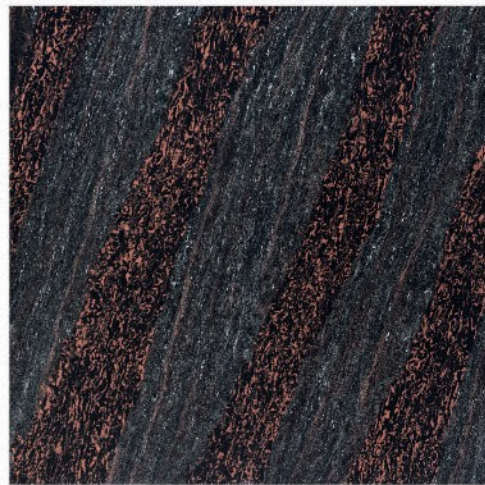
AMBER GOLD



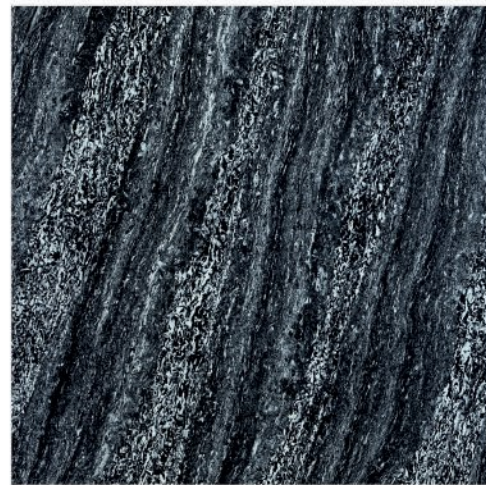
AMBER CHOCO



AMBER GREY



AMBER RED



AMBER BLACK





ROYAL WHITE



ROYAL GOLD



ROYAL PINK



ROYAL LUSH



ROYAL PISTA



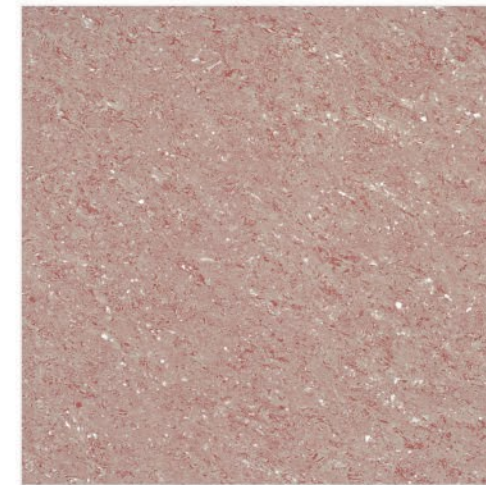
ROYAL CREMA



ROYAL CHOCO



ROYAL TERRA



ROYAL RUBY





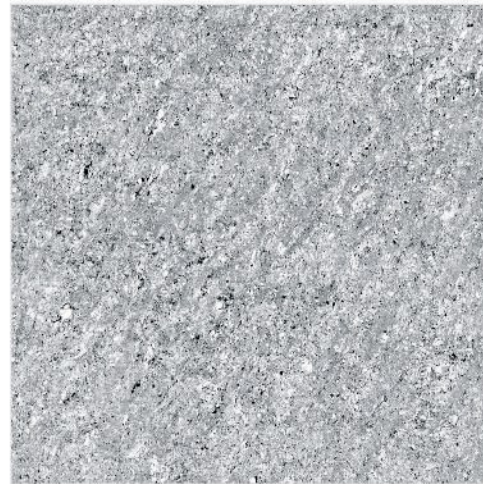
ROYAL MOCA



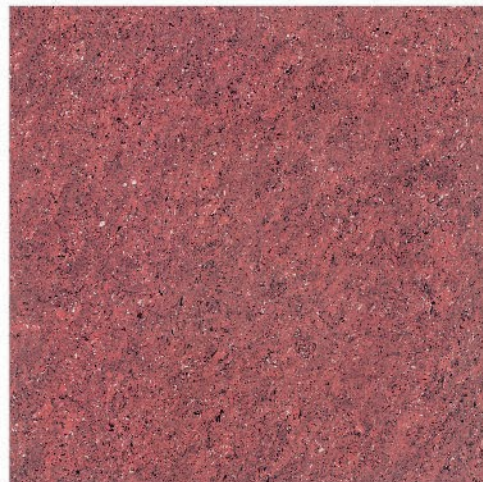
ROYAL BLACK



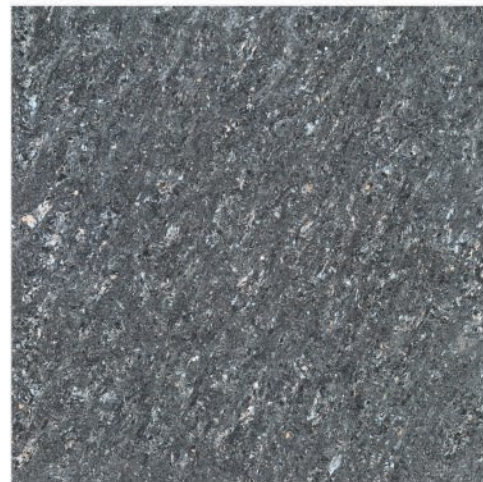
ROYAL BROWN



ROYAL GREY



ROYAL LAVA



ROYAL GALAXY

600x600mm

FULL BODY

STONE
SERIES MATT SERIES

600x600mm

FULL BODY

Granite
SERIES GLOSSY SERIES

600x1200mm

FULL BODY

ROCK
SERIES MATT SERIES

Ultra Polished
Nano Technology

Divine
Glossiness

Abrasion
Resistance

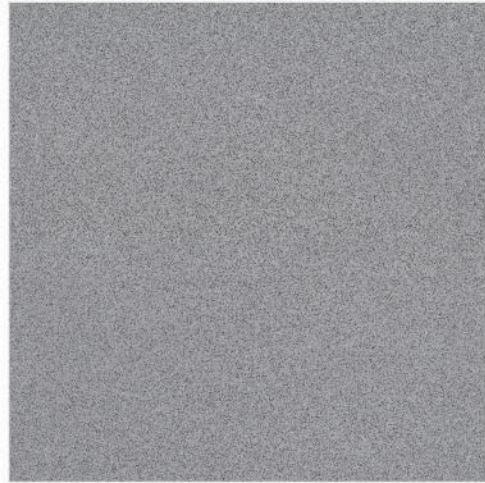
Eco Friendly

Zero
Maintenance

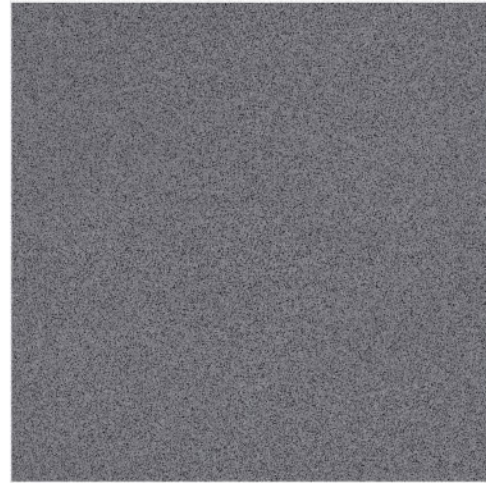
100% Replacement
for Italian Marble

Low Water
Absorption

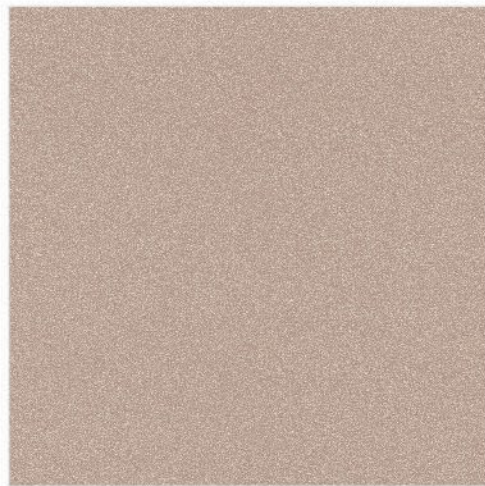




STONE SILVER



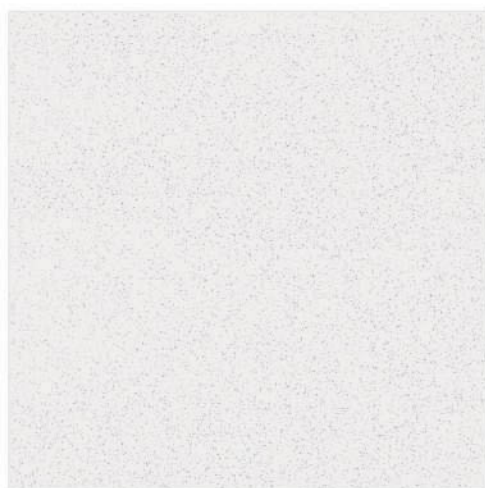
STONE SLATE



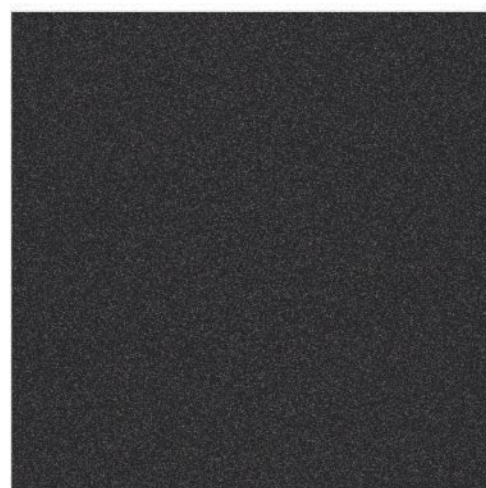
STONE ROSE



STONE SANDY



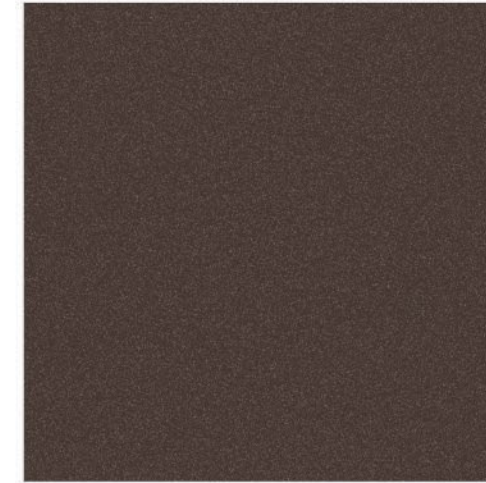
STONE WHITE



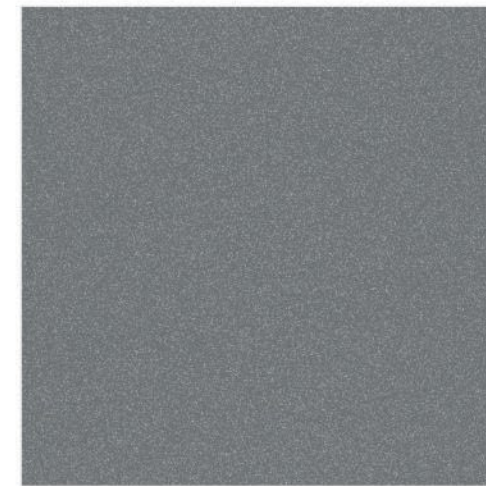
STONE NERO



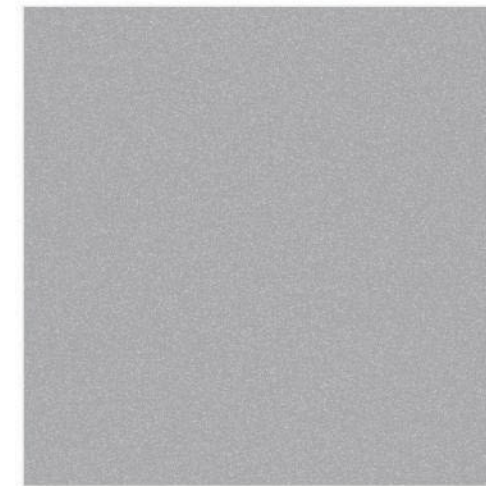
STONE COTTA



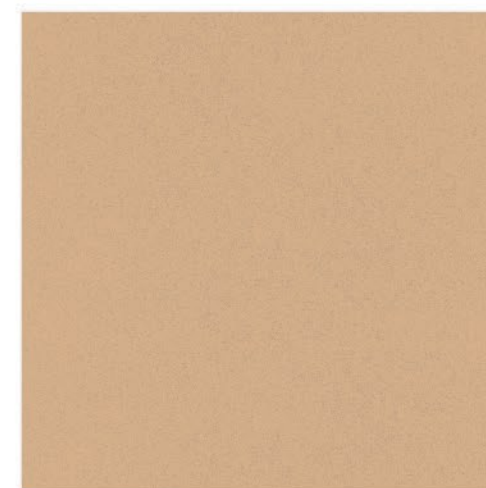
STONE WINE



STONE GREY



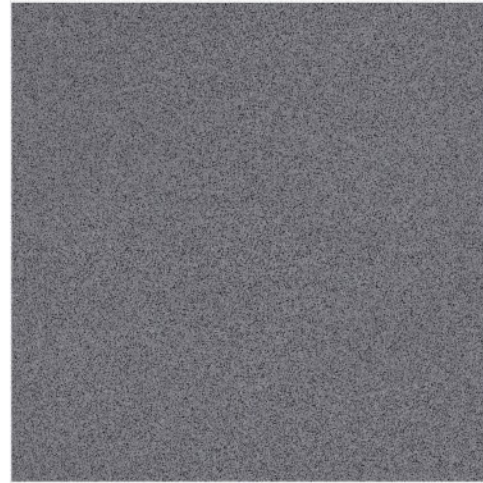
STONE LIGHT GERY



STONE FIRE



GRANITE SILVER



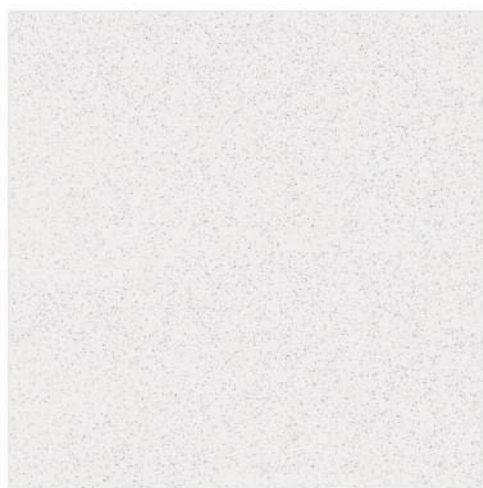
GRANITE SLATE



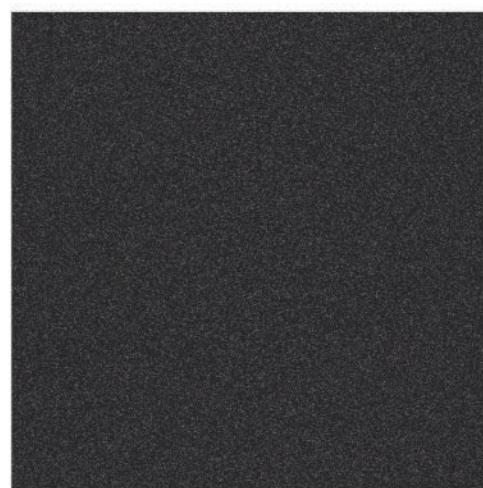
GRANITE ROSE



GRANITE SANDY



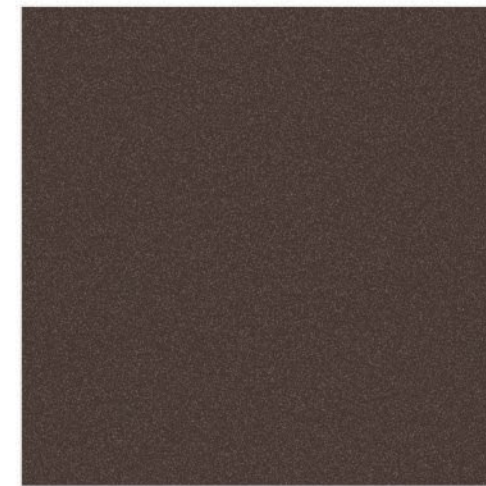
GRANITE WHITE



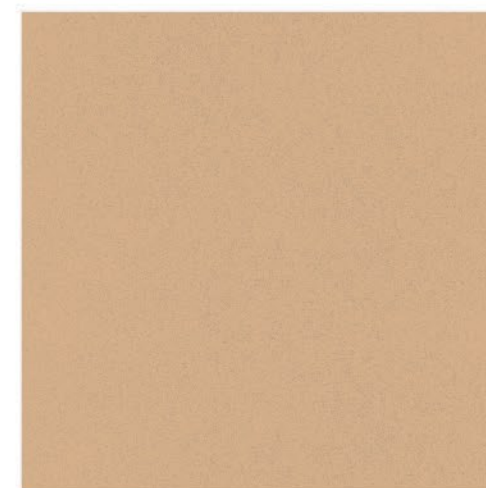
GRANITE BLACK



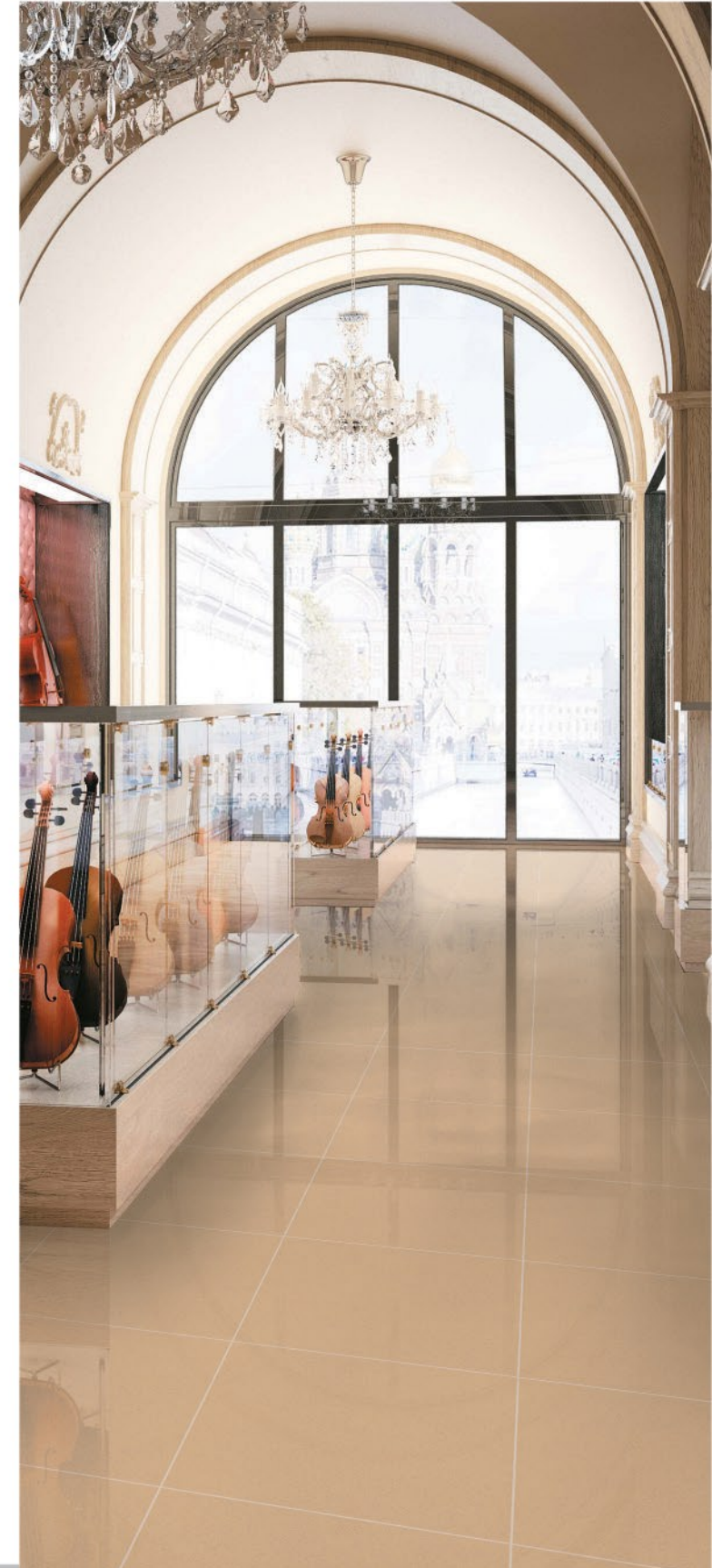
GRANITE COTTA



GRANITE WINE



GRANITE FIRE



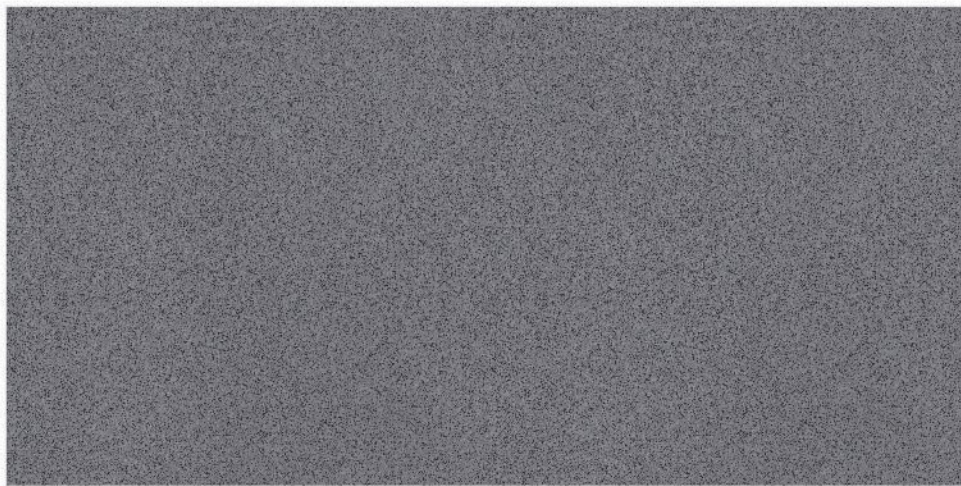
ROCK
SERIES

60x120^{cm}
600x1200^{mm}
MATT SERIES

**FULL
BODY**
VITRIFIED TILES



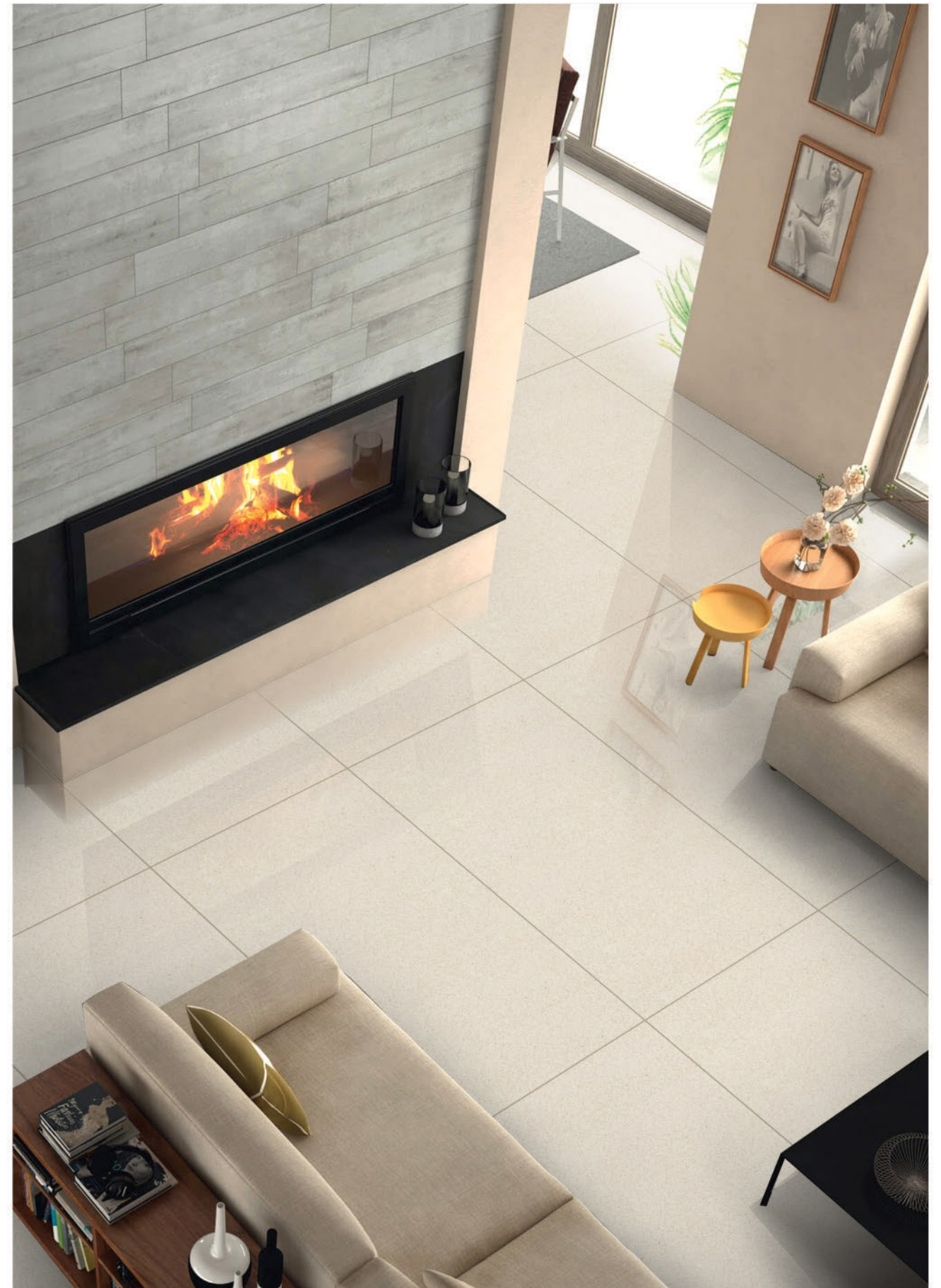
ROCK SILVER

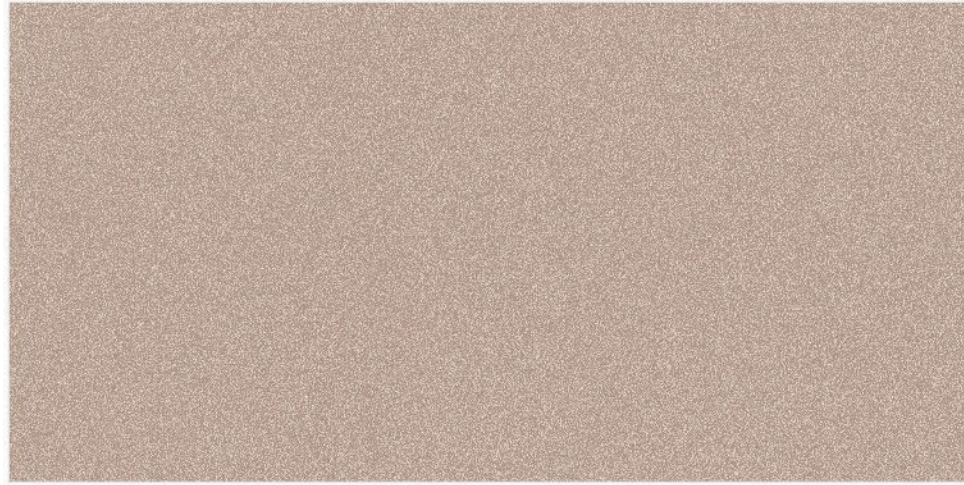


ROCK SLATE



ROCK SANDY

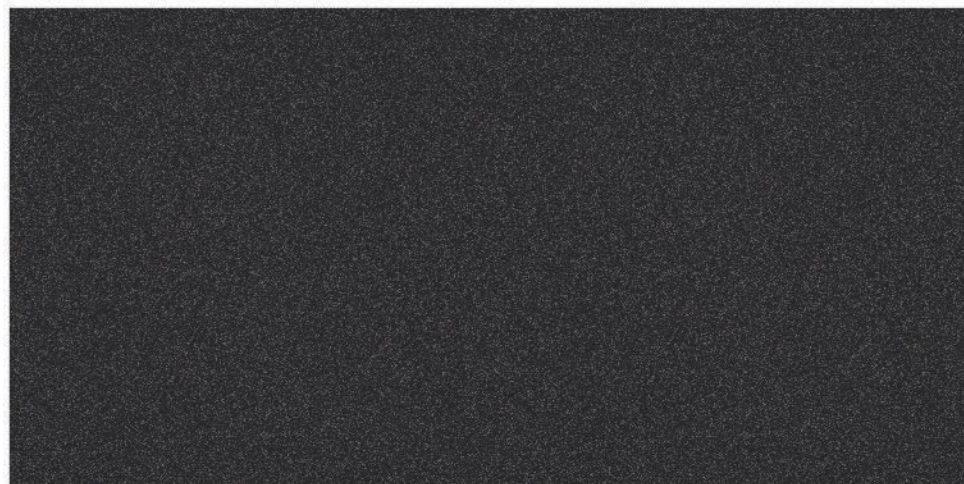




ROCK ROSE



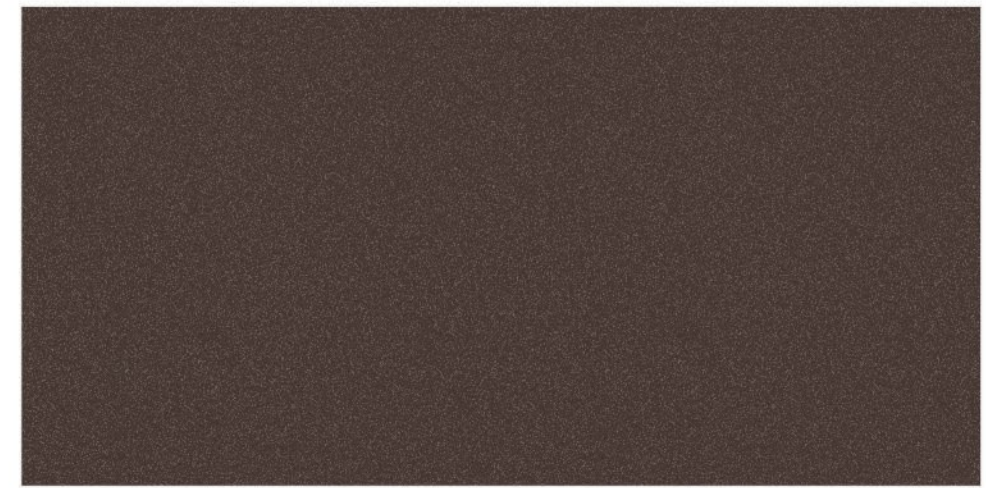
ROCK WHITE



ROCK NERO



ROCK COTTA



ROCK WINE



ROCK FIRE



Technical Specification

Sr. No.	Property	International Std. ISO 13006/En 176 Group Bla	Value	Method of Testing
1	Deviation in Length	± 0.6%	± 0.1%	EN 98
2	Deviation in Thickness	± 5.0%	± 5.0%	EN 98
3	Straightness of Sides	± 0.5%	± 0.1%	EN 98
4	Rectangularity	± 0.6%	± 0.2%	EN 98
5	Surface Flatness	± 0.5%	± 0.2%	EN 98
6	Water Absorption*	<0.5%	<0.05%	EN 99
7	Mohs hardness*	>6	>8	EN 101
8	Flexural Straightness*	>27 N/mm ²	>47 N/mm ²	EN 100
9	Abrasion Resistance	<204 mm ³	<144 mm ³	En 102
10	Skid Resistance (Friction Coefficient)	>0.4	>0.6	ASTM C-1028
11	Breaking Strenght*	1113 N	2830 N	ASTM C-648
12	Density (g/cc)	>2	2.4	DIN 51082
13	Frost Resistance	Frost Proof	Frost Proof	EN 202
14	Chemical Resistance	No Damage	No Damage	EN 106
15	Thermal Shock Resistance	No Damage	No Damage	EN 104
16	Colour Resistance	No Damage	No Damage	DIN 51094
17	Thermal Expansion	<9 x 10 ⁻⁶	<6 x 10 ⁻⁶	03 EN 1
18	Stain Resistance	Resistant	Resistant	ISO 10454-14
19	Moisture Expansion	Nil	Nil	ISO 10545-10
20	Glossiness	-	Min 65% - 70% reflection	Glossmeter

Note :

The reproduction of tiles in this catalogue is restricted to four colour printing only and tiles are not relative in sizes. Conforming to ISO requirements, technical specifications of are applicable only for first grade / first quality vitrified Please inspect all tiles prior to installation. Company will not entertain complaints once tiles are laid / fixed. Price category may change without any notice. Customers are advised to confirm it before placing order.

Packing Details of Double Charge Vitrified Tiles

Sr. No.	Size	No. of Tiles / Boxes	Coverage Area	
1	600x1200mm	2	1.44 Sq.Mtr.	15.50 Sq.Ft.
2	800x800mm	3	1.92 Sq.Mtr.	20.67 Sq.Ft.
3	600x600mm	4	1.44 Sq.Mtr.	15.50 Sq.Ft.

Packing Details of Full Body Vitrified Tiles

Sr. No.	Size	No. of Tiles / Boxes	Coverage Area	
1	600x1200mm	2	1.44 Sq.Mtr.	15.50 Sq.Ft.
2	600x600mm	4	1.44 Sq.Mtr.	15.50 Sq.Ft.

