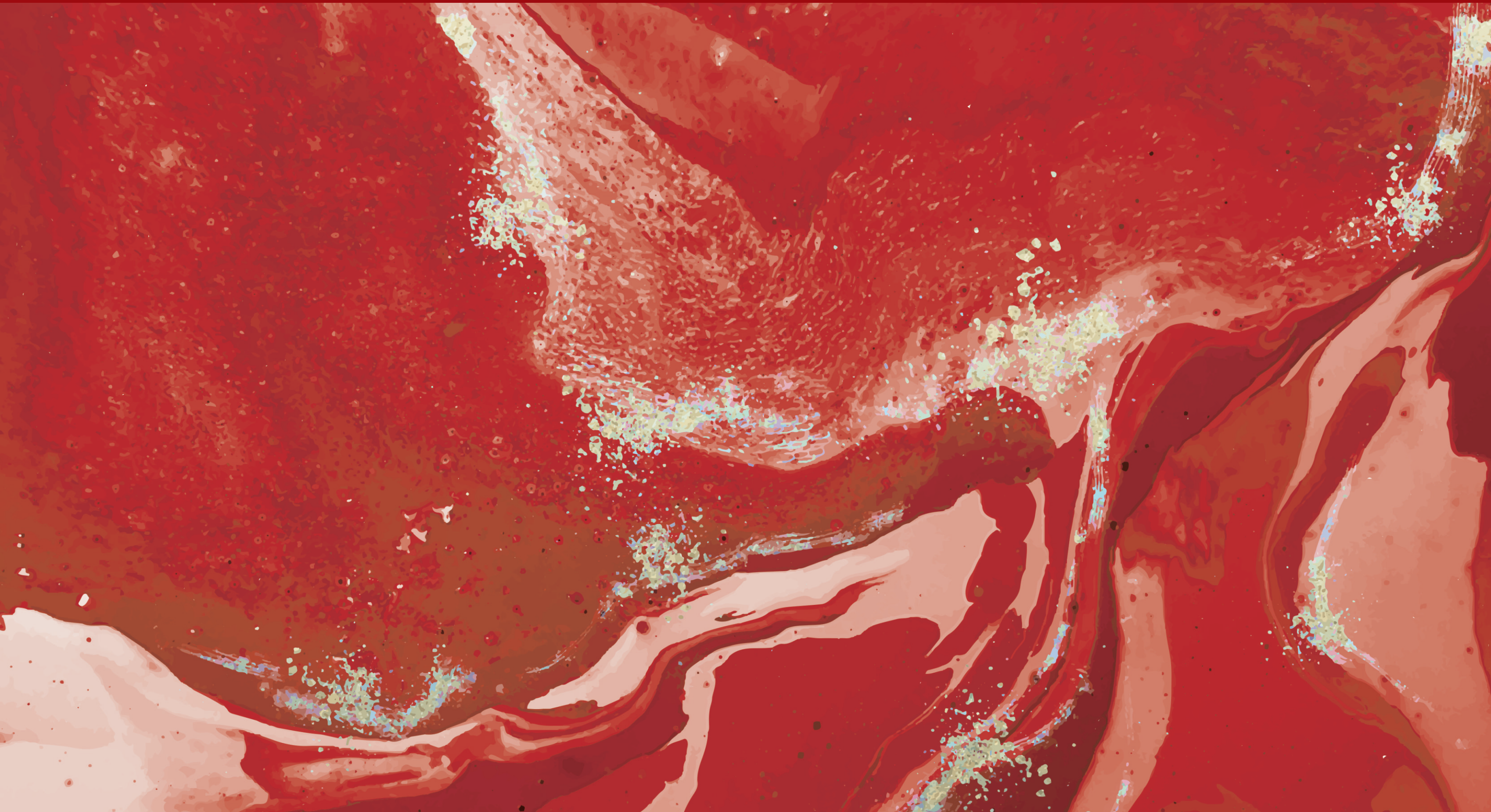


HEXAGON
SERIES 2021





Adding New
Dimension
in **Porcelain Tile**
Collection



EVERY SINGLE PLACE **INSPIRES** **US TO CREATE** **NEW LIVING**

Antiqua Ceramic Pvt. Ltd. is new venture of Antique group of companies, which is India's largest vitrified tiles manufacturer. Antiqua ceramic was incorporated with a view to create the distinguished brand among the prevailing similar standard brands. It only could be achieved through constant improvement in quality through R&D innovation and a vigilant watch on entire process. The company has also applied for ISO 9001:2000 Certification.

Company's manufacturing unit is situated at Jetpar road in Morbi. This unit has great R & D equipment and able staff to deliver newer better designs of tiles to suit the need of the current market and future expectations of the consumer. The quality control is well equipped with a full-fledged laboratory. India in the past few years has changed to becoming a society obsessed with better, bigger and stylish products. The consumers are looking for Antique Lifestyles. Antique group with its eagle eye on the market was not the one to stay behind.

The state of the art technology coupled with exciting design support, made the company become the leader in floor tiles in India. Internationally, the company has done extremely well in expanding its market base in very short period. Its Distribution channels and excellent brand image make the company a favourite of the distributors across India. The styles and the new introductions are always waited for and cherished.

Our Mission

We intend to conduct our business in a way that not only meets but exceeds the Expectations of our customers, business partners, distributors, buyers and creditors, as Well as the communities in which we operate and society at large. As a part of our mission we will

- Empower and train our employees to deliver better work outputs.
- We will introduce new designs in the markets that benefit our customers.
- We will make our products easily available and largely affordable to make our distributors and importers profitable.
- We will make all our actions socially and morally responsible

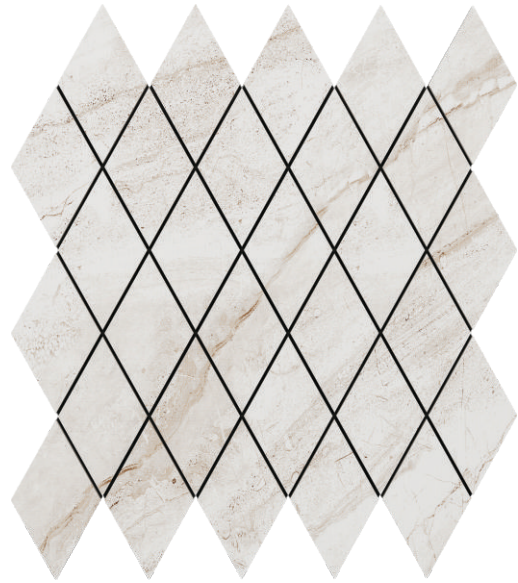
Our Technologies

The Plant consists a Heavy Capacity Presses, (Made in Italy) Glazed Lines, Roller Kilns (All Made in Italy), Boil Mill Grinding Unit, Spray Dryer Made in China. Raw Material is procured from famous supplier and being brought from Rajasthan and also imported from Ukraine.

Series:

D I A M O N D

D 4896



TECHNICAL SPECIFICATIONS

CHIP SIZE : 48x96mm

TILES Pcs. : 30pcs

SHEET SIZE : 346x315mm

WEIGHT : 1.5Kgs.
(Kg/Sheet)

THICKNESS : 8.5mm

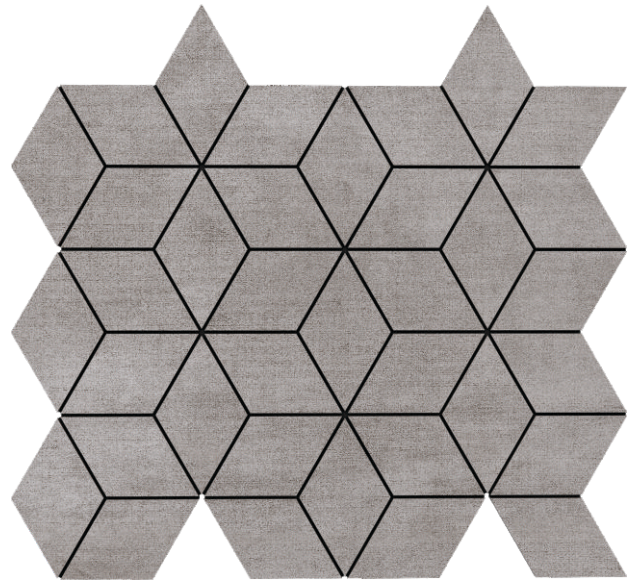
JOINT : 2mm



Series:

D I A M O N D

3D 4896



TECHNICAL SPECIFICATIONS

CHIP SIZE : 48x96mm

TILES Pcs. : 36pcs

SHEET SIZE : 344.50x299mm

WEIGHT : 1.6Kgs.
(Kg/Sheet)

THICKNESS : 8.5mm

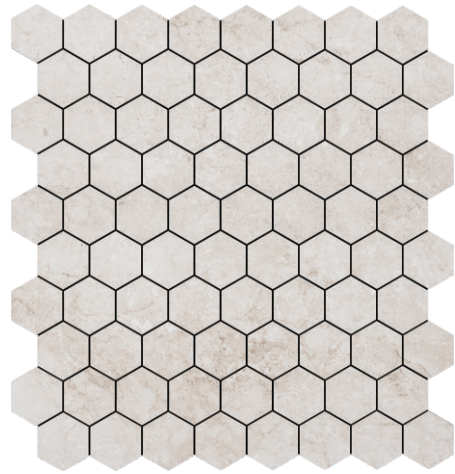
JOINT : 2mm



Series:

HEXAGONE

H 3232



TECHNICAL SPECIFICATIONS

CHIP SIZE : 32mm

TILES Pcs. : 90pcs

SHEET SIZE : 292.38x296mm

WEIGHT : 16Kgs.
(Kg/Sheet)

THICKNESS : 8.5mm

JOINT : 2mm



Series:

HEXAGONE

H 7373



TECHNICAL SPECIFICATIONS

CHIP SIZE : 73mm

TILES Pcs. : 16pcs

SHEET SIZE : 258x298mm

WEIGHT (Kg/Sheet) : 1.7Kgs.

THICKNESS : 8.5mm

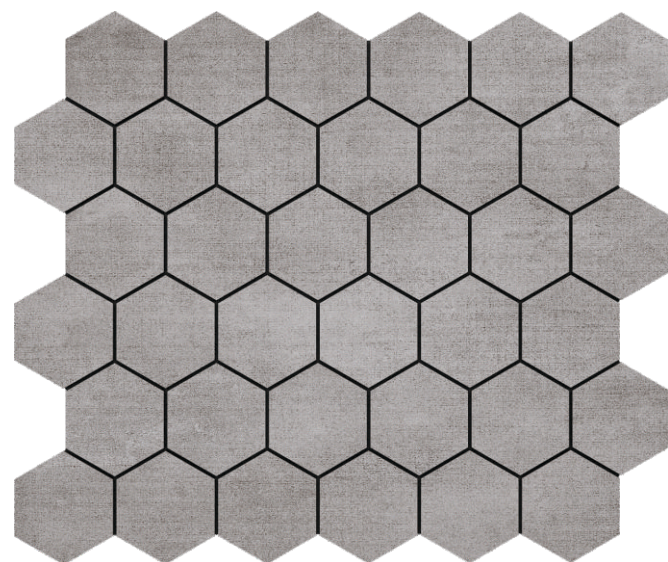
JOINT : 2mm



Series:

H E X A G O N E

H 4848



TECHNICAL SPECIFICATIONS

- CHIP SIZE : 48mm
- TILES Pcs. : 36pcs
- SHEET SIZE : 301.38x298mm
- WEIGHT (Kg/Sheet) : 1.65Kgs.
- THICKNESS : 8.5mm
- JOINT : 2mm



Series:

S Q U A R E

S 7373



TECHNICAL SPECIFICATIONS

CHIP SIZE : 73mm

TILES Pcs. : 16pcs

SHEET SIZE : 298x298mm

WEIGHT : 1.7Kgs.
(Kg/Sheet)

THICKNESS : 8.5mm

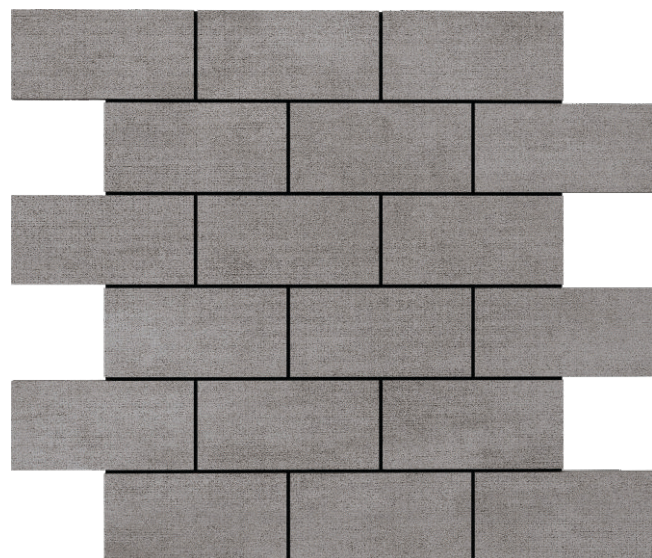
JOINT : 2mm



Series:

R E C T A N G E L

R 4898



TECHNICAL SPECIFICATIONS

CHIP SIZE : 48X98mm

TILES Pcs. : 18pcs

SHEET SIZE : 298x298mm

WEIGHT : 1.55Kgs.
(Kg/Sheet)

THICKNESS : 8.5mm

JOINT : 2mm



Series:

R E C T A N G E L

R 48450



TECHNICAL SPECIFICATIONS

CHIP SIZE : 48X450mm | 48x148mm

TILES Pcs. : 12pcs

SHEET SIZE : 298x600mm

WEIGHT : 2.9Kgs.
(Kg/Sheet)

THICKNESS : 8.5mm

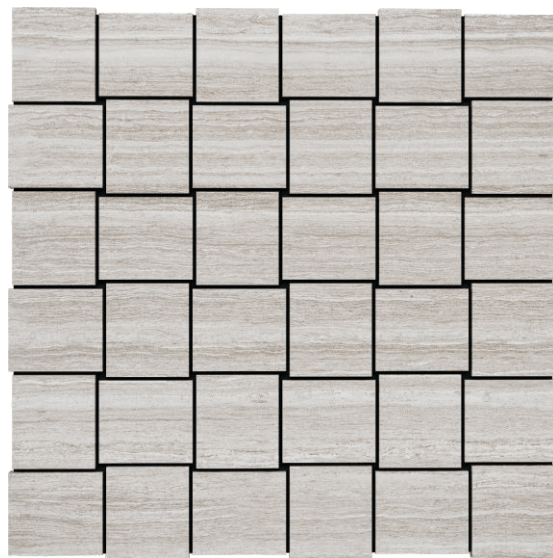
JOINT : 2mm



Series:

B A S K E T

R 5145



TECHNICAL SPECIFICATIONS

CHIP SIZE : 51X45mm

TILES Pcs. : 36pcs

SHEET SIZE : 301x301mm

WEIGHT : 1.7Kgs.
(Kg/Sheet)

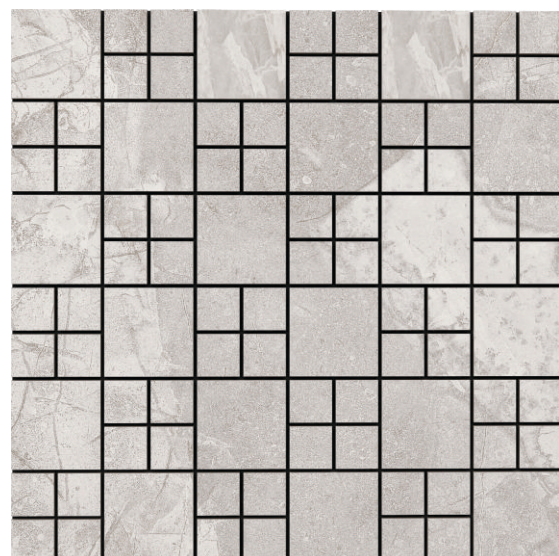
THICKNESS : 8.5mm

JOINT : 2mm



Series:

MIX SQUARE
SM 2348



TECHNICAL SPECIFICATIONS

CHIP SIZE : 23X23mm | 48X48mm

TILES Pcs. : 90pcs

SHEET SIZE : 298x298mm

WEIGHT : 1.55Kgs.
(Kg/Sheet)

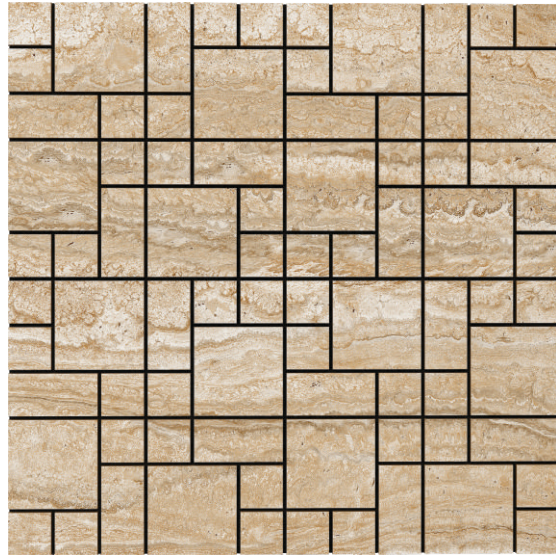
THICKNESS : 8.5mm

JOINT : 2mm



Series:

SQUARE RECTANGLE
SR 2348



TECHNICAL SPECIFICATIONS

CHIP SIZE : 23X23mm | 48x48mm | 23x48mm

TILES Pcs. : 100pcs

SHEET SIZE : 298x298mm

WEIGHT : 1.5Kgs.
(Kg/Sheet)

THICKNESS : 8.5mm

JOINT : 2mm



Series:

CHEVRON
C 3590



TECHNICAL SPECIFICATIONS

CHIP SIZE	:	35x90mm
TILES Pcs.	:	12pcs
SHEET SIZE	:	120x750mm
WEIGHT (Kg/Sheet)	:	1.7Kgs.
THICKNESS	:	8.5mm
JOINT	:	2mm



Series:

HERRING BONE
HB 2375



TECHNICAL SPECIFICATIONS

CHIP SIZE : 23X23mm | 48x48mm | 23x48mm

TILES Pcs. : 48pcs

SHEET SIZE : 298x298mm

WEIGHT : 1.5Kgs.
(Kg/Sheet)

THICKNESS : 8.5mm

JOINT : 2mm



TECHNICAL SPECIFICATION

TEST DESCRIPTION	STANDARD AS PER ISO 13006/EN 176 GROUP BLA	OUR VALUE	METHOD OF TESTING
DEVIATION IN LENGTH	±0.50%	±0.30%	EN 98
DEVIATION IN THICKNESS	±5.0%	±3.0%	EN 98
STRAIGHTNESS OF SIDES	±0.50%	±0.30%	EN 98
RECTANGULARITY	±0.60%	±0.30%	EN 98
SURFACE FLATNESS	±0.50%	±0.30%	EN 98
WATER ABSORPTION	<3%	<3%	ISO 10945.3 EN 98
MOHS HARDNESS	>5	>5	EN 101
FLEXURAL STRENGTH	>35 N/SQ. MM	>39 N/Sq. mm	--
ABRASION RESISTANCE	AS SPECIFIED BY MANU	PE I 3	ISO 10545.6 EN 102
FROST RESISTANCE	FROST PROOF	Frost Proof	ISO 10545 - 11
CHEMICALS RESISTANCE	NO DAMAGE	No Damage	ISO 10545 - 18
THERMAL SHOCK RESISTANCE	NO DAMAGE	No Damage	ISO 10545 - 9
COLOUR RESISTANCE	NO DAMAGE	No Damage	--
STAIN RESISTANCE	RASISTANCE	Rasistance	ISO 10545 - 14
MOISTURE EXPANSION	NIL	Nil	ISO 10545 - 10
CRAZING RESISTANCE	MIN. 2 CYCLE	Min. 4 Cycle	--

PACKING DETAILS

DIMENSION	THICKNESS (APPROX.)	NO. OF TILES PER BOX	COVERAGE AREA (APPROX.)	WEIGHT (APPROX.)
300 X 300 MM	09 MM	8 PCS.	8.00 SQ. FT.	11.5 KGS.(Approx.)

DISCLAIMER : We tiles reserve the right to deleted and amend either totally or partially, any of the colors, shape, sizes, references and other technical specification contained in this catalogue at anytime. The colors shown of tiles in this catalogue are purely illustrative and limited to printing process. Please refer actual sample before final selection. The details of sizes, colors, references should be verified for typographical errors.

